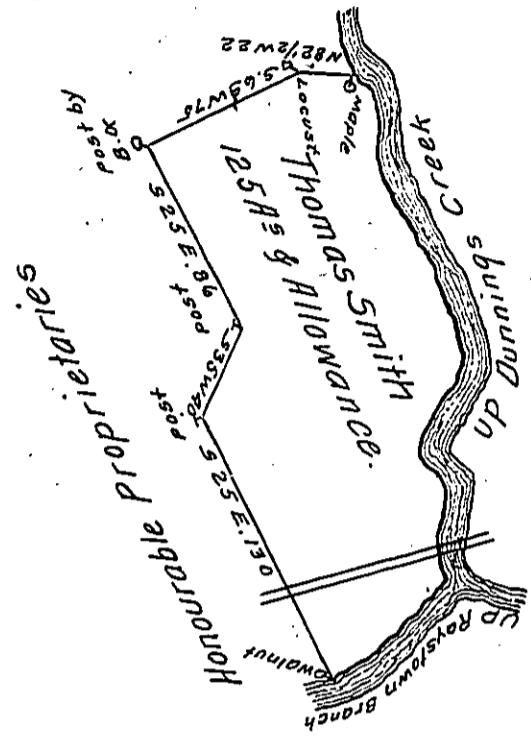


Courses & distances down  
 (obl.) Raystown Branch from  
 (obl.) Walnut.  
 S 77 E 3 1/2  
 N 52 E 66 thence up  
 (obl.) Dunning's Creek  
 N 7 W 19.  
 (obl.) 32 (obl.) 18.  
 (obl.) 48 (obl.) 27.  
 (obl.) (obl.) (obl.) 27  
 (obl.) (obl.) (obl.) 14 1/2  
 (obl.) (obl.) (obl.) 18  
 (obl.) (obl.) (obl.) 20  
 (obl.) (obl.) (obl.) 3  
 (obl.) (obl.) (obl.) 13  
 (obl.) (obl.) (obl.) (obl.) 1/2



A Draught of a Tract of Land called the Hermitage, situ (obl.) Begin-  
 ning at the Raystown Branch of Juniata and extending (obl.) the west  
 side of Dunning's Creek including a fifty Acre Survey (obl.) merly made  
 for George Woods Esquire in the Township and County (obl.) Bedford  
 being part of a Survey formerly made for George Croghan (obl.) taining  
 one hundred and twenty five Acres and the usual allo (obl.) of six pr  
 Cent for Roads &c. Surveyed the sixth Day of May 1776 (obl.) Thomas  
 Smith Esquire in pursuance of a Warrant dated the 19<sup>th</sup> Da (obl.)  
 March in the same Year.

To  
 John Lukens Esq<sup>r</sup> } George Woods (obl.)  
 Surveyor General }

IN TESTIMONY that the above is a copy of the original remaining on file in  
 the Department of Internal Affairs of Pennsylvania, made  
 conformably to an Act of Assembly approved the 16th day of  
 February, 1833, I have hereunto set my Hand and caused  
 the Seal of said Department to be affixed at Harrisburg,  
 this twenty first day of December 1910.

*Henry Fouck*  
 Secretary of Internal Affairs.